

GAPDH Mouse Monoclonal Antibody

AB0102

Glyceraldehyde 3 phosphate dehydrogenase (GAPDH) is well known as one of the key enzymes involved in glycolysis. GAPDH is constitutively expressed in almost all tissues at high levels, therefore antibodies against GAPDH are useful as loading controls for Western Blotting. Some physiological factors, such as hypoxia and diabetes, increase GAPDH expression in certain cell types.

Product Name: GAPDH mouse monoclonal antibody

Clone Number: 2B8

Isotype: IgG1

Immunogen: Full-length GAPDH protein of human.

Tested applications: WB IHC

Recommended dilutions: WB: 1:2000-5000 IHC: 1:200

Optimal dilutions/concentrations should be determined by the end user.

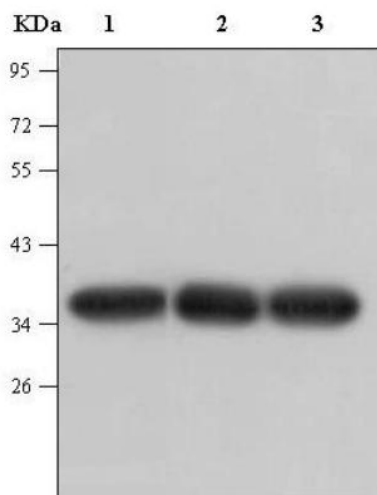
Molecular Weight: 37KD

Form: Liquid

Concentration: 1mg/ml in PBS, pH 7.4, containing 0.02% **sodium azide** and 50% glycerol

Storage: GAPDH antibody is stable for 1 month at 2-8°C. For long term storage, Aliquot and store at -20°C or below. Avoid repeated freezing and thawing cycles.

Reactivity: H, R, M, Mk, Dg, Ch Hm Rabbit



Western blot analysis of HeLa cell lysate(lane1) , Rat brain tissue lysate(lane2) and Mouse brain tissue lysate(lane3) with GAPDH mouse mAb(2B8) diluted at 1:5000.