

α -tubulin mouse monoclonal antibody

AB0104

Tubulin is one of several members of a small family of globular proteins. The tubulin superfamily includes five distinct families, the alpha-, beta-, gamma-, delta-, and epsilon-tubulins. The most common members of the tubulin family are α -tubulin and β -tubulin, the proteins that make up microtubules. Each has a molecular weight of approximately 55 KD. Microtubules are assembled from dimers of α - and β -tubulin.

Product Name: α -tubulin Mouse Monoclonal Antibody

Isotype: IgG1

Clone Number: 9F12

Storage Buffer : PBS, pH 7.4, containing 0.02% **sodium azide** as Preservative and 50% Glycerol

Storage instructions: -20°C. Do not aliquot the antibody

Recommended dilutions: WB: 1:5,000-10,000 IP: 1:200 IF: 1:100-200 IHC: 1:200-500

Optimal dilutions should be determined by the end user.

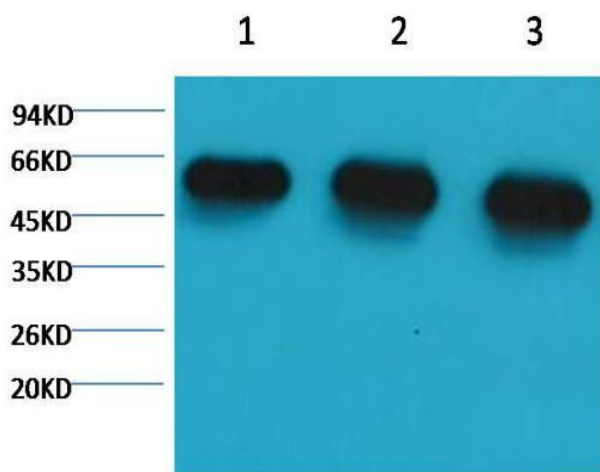
Specificity: The α -tubulin antibody can detects endogenous α -tubulin protein

Alternative Names: alpha tubulin 2, B alpha 1, H2 alpha, Hum a tub 1, TUBA1, TUBA1A, Tubulin alpha 1 chain

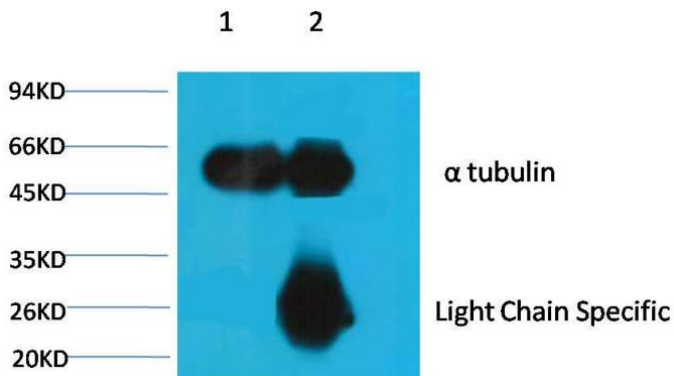
Molecular Weight: 52KD

Form: Liquid

Reactivity: H, R, M, zebra fish



Western blot analysis of 1) HeLa, 2) Rat Brain Tissue,
3) Mouse Brain Tissue with AB0104-100 μ L diluted at 1:5,000



1、 Input: Mouse Brain Tissue Lysate

2、 IP product: IP dilute 1:200 Western blot analysis: primary antibody: AB0104-100 μ L 1:5,000

Secondary antibody: Goat anti-Mouse IgG, Light chain specific, 1:5,000