

β -Tubulin mouse monoclonal antibody

AB0105

Microtubules are constituent parts of the mitotic apparatus, cilia, flagella, and elements of the cytoskeleton. They consist principally of 2 soluble proteins, alpha-and beta-tubulin, each of about 55,000 kDa. Antibodies against beta Tubulin are useful as loading controls for Western Blotting. However it should be noted that levels of β -Tubulin may not be stable in certain cells. For example, expression of β -Tubulin in adipose tissue is very low and therefore β -Tubulin should not be used as loading control for these tissues.

Product Name: β -Tubulin mouse monoclonal antibody

Clone Number: 6G4

Isotype: IgG1

Immunogen: Full-length β -Tubulin protein of human.

Tested applications: WB, IHC. Not yet tested in other applications.

Recommended dilutions: WB: 1:2000-5000 IHC: 1:200 IF: 1:100-200

Optimal dilutions/concentrations should be determined by the end user.

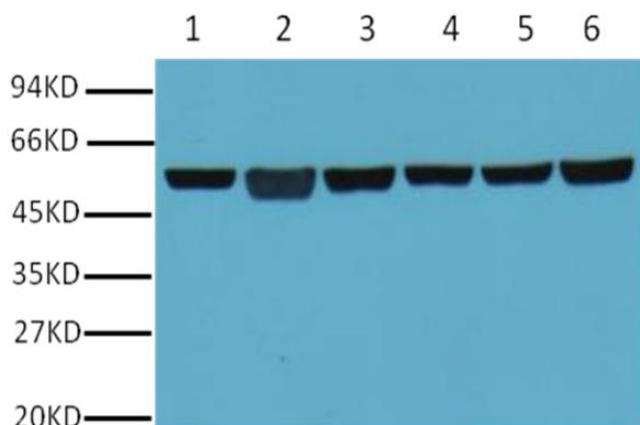
Molecular Weight: 55KD

Form: Liquid

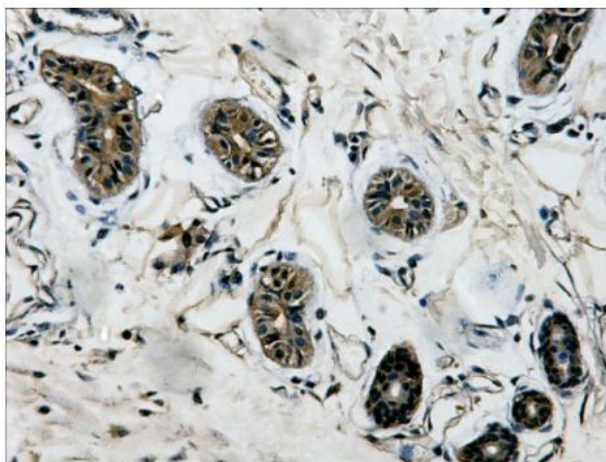
Concentration: 1mg/ml in PBS, pH 7.4, containing 0.02% sodium azide and 50% glycerol

Storage: β -Tubulin antibody is stable for 1 month at 2-8°C. For long term storage, Aliquot and store at -20°C or below. Avoid repeated freezing and thawing cycles.

Reactivity: H, R, M, Mk, Zebrafish



Western blot analysis of A549 (1) , Rat brain (2) ,Mouse brain ,Chicken lung (4) and Rabbit testis (5),Sheep muscle (6) with β -tubulin mouse mAb(6G4) diluted at 1:5000.



Immunohistochemistry Staining of Human colon tissue with β -Tubulin mouse mAb(6G4) diluted at 1:200.