

His-Tag mouse monoclonal antibody

AB1106

Monoclonal antibodies specific to six histidine tags can greatly improve the effectiveness of several different kinds

of immunoassays, helping researchers identify, detect, and purify polyhistidine fusion proteins in bacteria, insect cells, and mammalian cells. His-tag mouse mAb recognizes His-tag placed at N-terminal, C-terminal, and internal regions of fusion proteins.

Product Name: His-tag mouse monoclonal antibody

Clone Number: 6E8

Isotype: IgG1

Immunogen: A synthetic peptide HHHHHH coupled to KLH.

Tested applications and dilutions: WB 1:5000-2000 IP 1:200 IF 1:1000

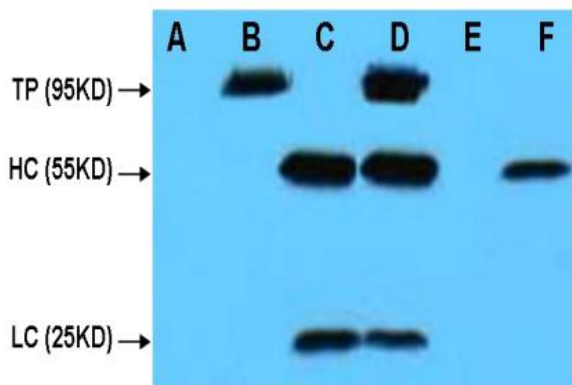
Produce anti-HIS antibody affinity column purify HIS recombinant proteins

Form: Liquid

Concentration: 1mg/ml in PBS, pH 7.4, containing 0.02% sodium azide and 50% glycerol

Storage: His antibody is stable for 1 month at 2-8°C. For long term storage, Aliquot and store at -20°C or below.

Avoid repeated freezing and thawing cycles.



A: HEK 293 cell lysate without transfected

B: HEK 293 cell lysate transfected with his-tag protein

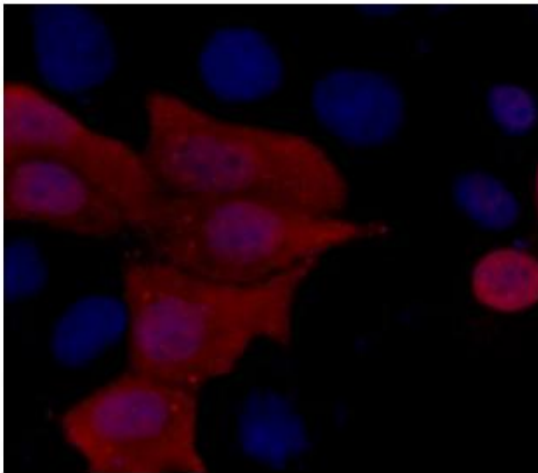
C: IP (PBS + anti-HIS mAb 4°C overnight)

D: IP (HEK293 transfected+protein G+anti-HIS mAb 4°C overnight)

E: IP (HEK293 transfected+RIPA+Protein G 4°C overnight)

F: Multi Tag Recombinant protein (expressed in E.coli)

TP=Target Protein HC=Heavy chain LC=Light Chain



*IF analysis of 293T cells transfected with a HIS-tagged protein,
using EASYbio HIS-Tag (6E8) Mouse mAb at a 1:2000 dilution
(blue DAPI, red anti-HIS)*